

The logo is a dark green scalloped circle with a light green border. Inside the circle, the name 'KATIE CARDEW' is written in a white, bold, serif font, stacked in two lines. Below the name, the words 'at home' are written in a white, lowercase, cursive font.

**KATIE
CARDEW**

at home

STYLE SHEET

1. Classic Country House Style

See also:
Edward Bulmer
Robert Kime
Soane



2. Modern Eclectic

Bright and bold in a cottage style

See also:
Emma Ainscough
Louise Roe
Rita Konig

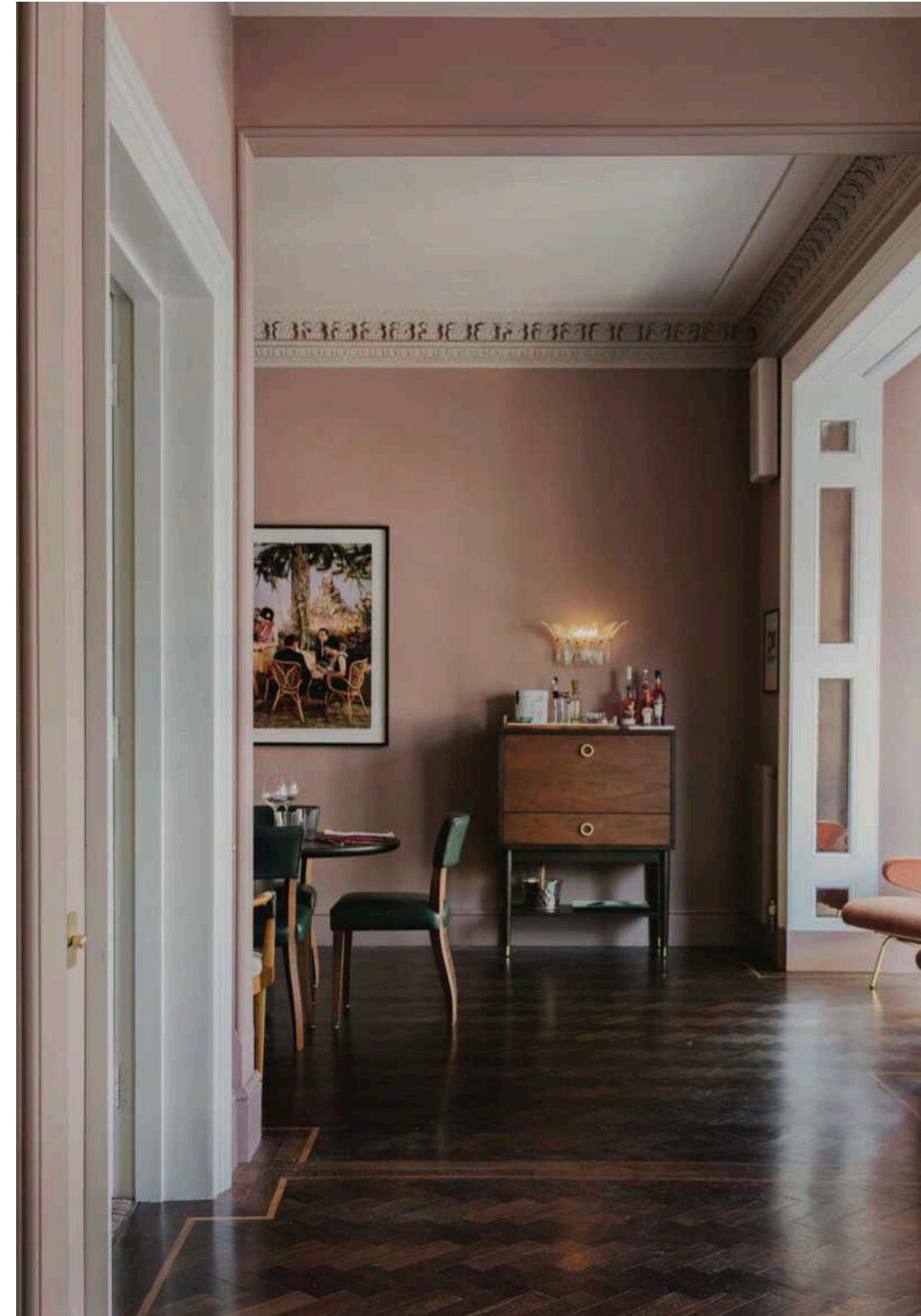
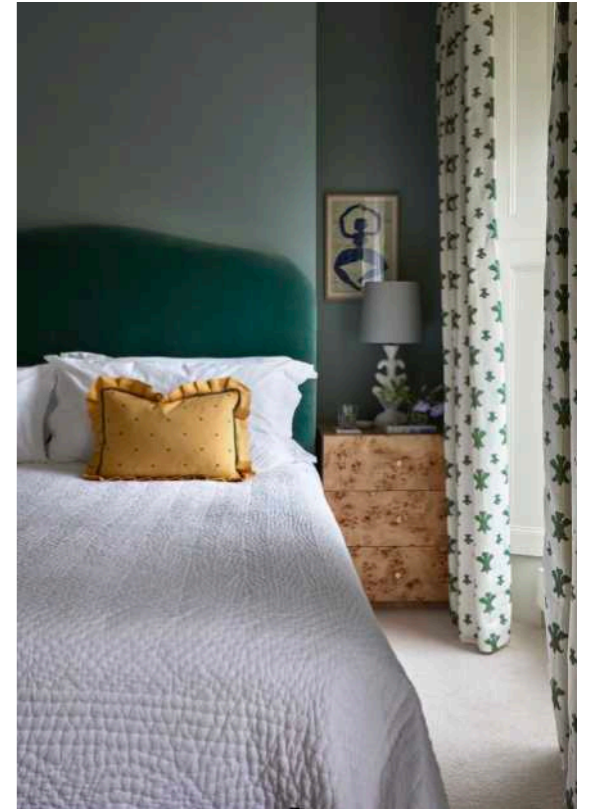


2. Modern Eclectic *continued*
Bright and bold in a cottage style



3. Modern bold

Bright and bold with clean lines.
Less cottagey than style 2



4. Modern clean

Neutrals with pops of colour
See: Kin House





5. Monochrome

More classical, with shades of taupe, white, grey and beige with the occasional use of colour

